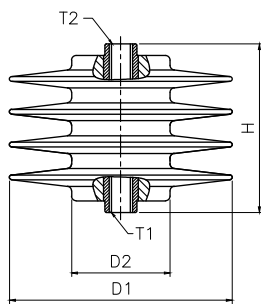
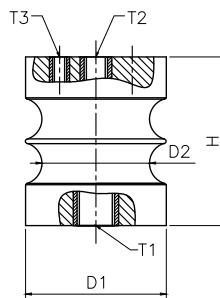


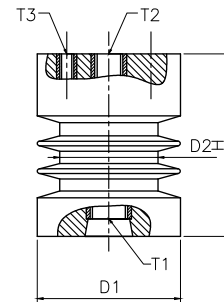
3.3 KV EPOXY INSULATORS



IN1112



IN1030



IN1001

DIMENSIONAL DATA

ITEM NAME	ITEM CODE	D1	D2	H	INSERT		INSERT		INSERT	
					T1	L1	T2	L2	T3	L3
SIGA 01	IN1001	61	45	75	M12	20	M10	10	M6	9
INSULATOR 60X55	IN1030	60	50	55	M10	15	M10	15	M6	9
LINK HHV	IN1112	91	40	72	M10	20	M10	20	-	-

MECHANICAL CHARACTERISTICS

ITEM NAME	ITEM CODE	CREEPAGE	LOAD DISTANCE FROM THE FACE	CANTILIVER BREAKING LOAD	TENSILE WITHSTAND LOAD	COMPRESSION WITHSTAND LOAD
SIGA 01	IN1001	115	10	> 400	> 1000	> 4000
INSULATOR 60X55	IN1030	64	10	> 400	> 1000	> 4000
LINK HHV	IN1112	234	10	-	> 500	> 4500

ELECTRICAL CHARACTERISTICS

DRY POWER FREQUENCY WITHSTAND VOLTAGE	10 KV FOR 1 MINUTE
DRY FLASH OVER	> 28 KV
IMPULSE WITHSTAND VOLTAGE	45 KVP