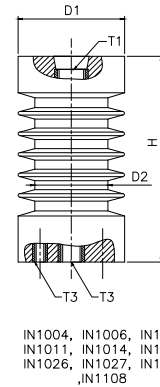
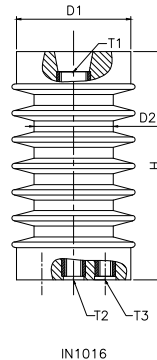
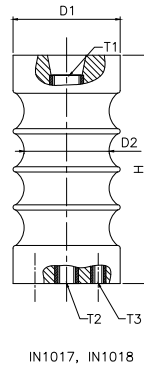
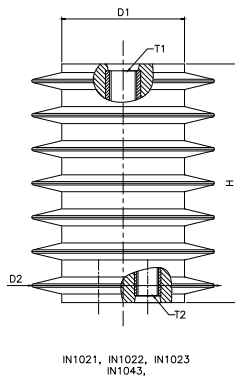


# 11 KV EPOXY INSULATORS



## DIMENSIONAL DATA

ITEM NAME	ITEM CODE	D1	D2	H	INSERT		INSERT		INSERT	
					T1	L1	T2	L2	T3	L3
SIGA 10	IN 1004	61	45	130	M16	32	M10	15	M6	9
SIGB 10	IN 1006	77	67	130	M20	36	M16	30	M10	16
SIGC 09	IN1010	91	73	130	M20	36	M16	30	M10	16
SIGC 10	IN 1011	95	76	130	M20	36	M16	30	M10	16
SIGK 09	IN 1014	56	42	130	M16	30	M10	16	M6	11
SIGK 10	IN 1015	68	52	130	M16	30	M10	16	M6	11
SIGM 10	IN 1016	66	46	130	M16	35	M8	15	M8	15
A-TYPE 009	IN 1017	65.5	48.5	130	M16	35	M10	22	M6	10
B-TYPE 004	IN 1018	77	58.5	130	M20	40	M16	40	M10	15
C-TYPE 023	IN 1019	95	78.5	130	M20	35	M16	32	M10	15
INSULATOR 72X130	IN1021	102	72	130	M20	32	M16	30	M10	15
INSULATOR 81X130	IN1022	115	84.5	130	M20	35	M16	35	M10	15
INSULATOR 132X150	IN1023	132	90	150	M20	30	M16	35	M16	35
ITEM -2	IN1026	79	61.5	130	M20	30	M16	32	M10	15
ITEM -3	IN1027	95	76	130	M20	30	M16	32	M10	15
ITEM -12	IN1028	120	86	130	M24	35	M16	40	-	-
INSULATOR 56X130	IN1034	65	42.5	130	M16	40	M10	32	-	-
A 11 INSULATOR	IN1035	70	53	150	M16	30	M12	25	-	-
A 12 INSULATOR	IN1036	75	58.5	130	M20	30	M16	32	-	-
INSULATOR 75/85 X 130	IN1043	85	60	130	M16	45	M10	25	M6	11
001 -5	IN1045	91	75	130	M20	35	M16	35	-	-
UZ	IN1046	91	58	130	M20	35	M16	35	-	-
VA	IN1047	110	75	130	M20	35	M16	35	-	-
RIGHT ENGG	IN1068	81	74.5	130	M20	30	M16	32	-	-
JC-02 125 X 150	IN1070	125	95	150	M20	39	M16	35	-	-
SIGA 12	IN1108	61	45	130	M16	32	M10	15	M6	9

next page...

# 11 KV EPOXY INSULATORS

## MECHANICAL CHARACTERISTICS

ITEM NAME	ITEM CODE	CREEPAGE	LOAD DISTANCE FROM THE FACE	CANTILIVER BREAKING LOAD	TENSILE WITHSTAND LOAD	COMPRESSION WITHSTAND LOAD
SIGA 10	IN 1004	180	30	>500	> 1000	> 10000
SIGB 10	IN 1006	190	40	>1000	> 2000	> 10000
SIGC 09	IN1010	177	30	>500	> 1000	> 10000
SIGC 10	IN 1011	203	50	> 1000	> 2000	> 10000
SIGK 09	IN 1014	187	30	> 500	> 2000	> 10000
SIGK 10	IN 1015	196	30	> 350	> 2000	> 10000
SIGM 10	IN 1016	248	30	> 500	> 2000	> 10000
A-TYPE 009	IN 1017	160	30	> 500	> 2000	> 10000
B-TYPE 004	IN 1018	152	40	> 1000	> 2000	> 10000
C-TYPE 023	IN 1019	152	50	> 1000	> 2000	> 10000
INSULATOR 72X130	IN1021	315	40	> 1000	> 2000	> 10000
INSULATOR 81X130	IN1022	315	40	> 1000	> 2000	> 10000
INSULATOR 132X150	IN1023	615	40	> 1600	> 2000	> 10000
ITEM -2	IN1026	222	40	> 1000	> 2000	> 10000
ITEM -3	IN1027	232	50	> 1000	> 2000	> 10000
ITEM -12	IN1028	256	50	> 2000	> 2000	> 10000
INSULATOR 56X130	IN1034	175	30	> 400	> 2000	> 10000
A 11 INSULATOR	IN1035	186	40	> 1000	> 2000	> 10000
A 12 INSULATOR	IN1036	164	40	> 1000	> 2000	> 10000
INSULATOR 75/85 X 130	IN1043	187	40	> 1000	> 2000	> 10000
001 -5	IN1045	182	40	> 1000	> 2000	> 10000
UZ	IN1046	248	40	> 1000	> 2000	> 10000
VA	IN1047	240	40	> 1000	> 2000	> 10000
RIGHT ENGG	IN1068	252	40	> 1000	> 2000	> 10000
JC-02 125 X 150	IN1070	240	50	> 1600	> 2000	> 10000
SIGA 12	IN1108	235	30	> 500	> 2000	> 10000

## ELECTRICAL CHARACTERISTICS

DRY POWER FREQUENCY WITHSTAND VOLTAGE	35 KV FOR 1 MINUTE
DRY FLASH OVER	> 50 KV
IMPULSE WITHSTAND VOLTAGE	75 KVP